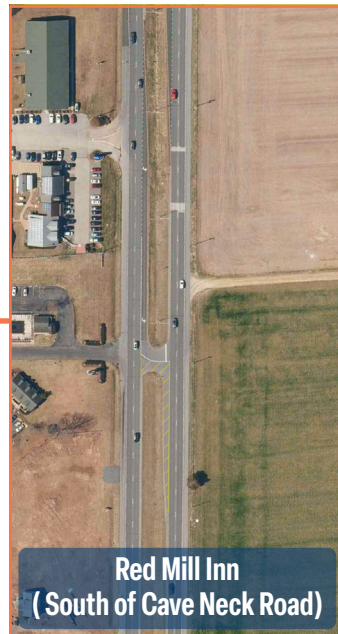
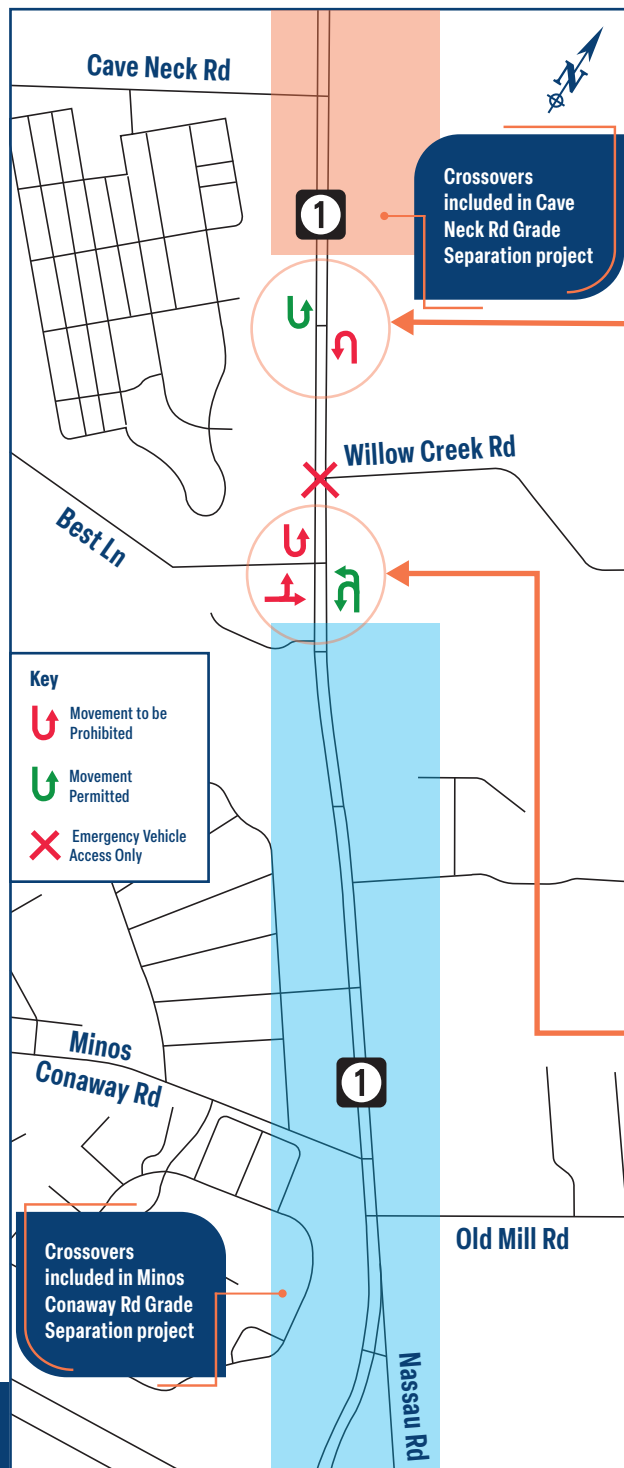




SR 1: Red Fox Run to Red Mill Pond

Upcoming Crossover Closures and Restrictions

October 2025



PROJECT NEED

- 8 angle crashes since 2012 at Willow Creek Road

PROJECT SUMMARY

- Reduces conflict points (crossing movements, crossover congestion)
- Short-term changes in line with long-term SR 1 planning
- Anticipated completion Fall 2025/ Spring 2026

IMPROVEMENTS

- All traffic required to turn right from Willow Creek Road and Best Lane
- Left turns onto Best Lane from SR 1 still permitted
- 1 crossover closed to typical traffic but remains available for use by emergency vehicles only
- 2 crossovers remain open to provide u-turn opportunities (one u-turn movement restricted to provide safe u-turn space for remaining traffic) - planned closure after Cave Neck Road grade separation is completed

HOW TO NAVIGATE

- Use peripheral road network where possible
- Utilize grade separated interchanges for safest u-turn movement

SAFE SYSTEM APPROACH

- Safety improvements should be **proactive**
- Goal to reduce crash severity
- Roadway injuries and fatalities are unacceptable

